



2024

OPS LENS – New Jersey Statewide Platform Implementation Plan

LENSTM

LAW ENFORCEMENT NOTIFICATION | SHARING PLATFORM

The following document outlines the process Online Policing Solutions, Inc. proposes putting into action to ensure an efficient and timely roll out of the newly implemented **OPS LENS™** (*Law Enforcement Notification and Sharing platform*), which operates within the **National Law Enforcement and Community Policing Integrated Network** (hereinafter referred to as the OPS Network™).

INTRODUCTION

The OPS Network™ platform is focused solely on creating a gateway and partnership between law enforcement agencies and the communities they serve, while ensuring technological growth, agency efficiency and cutting-edge operational law enforcement connectivity.

A cloud-based network application and software solution, the OPS Network™ provides proprietary interactive community policing tools designed specifically to promote police to public partnership in public safety, while improving law enforcement efficiency and services. The OPS Network™ is the only nationwide and jurisdictionally distinctive community policing network, global officer to officer communication platform and law enforcement specific operating system of its kind in existence today.

The OPS Network™ is a Partnership Project and has been developed and designed by law enforcement for law enforcement.

THE OPS NETWORK™ ARCHITECTURE

The OPS Network™ is unique in many ways, none-more unique than the way in which the network joins every agency, officer, and community member onto one system; yet allows each agency to maintain a level of individual control regarding how the network can best serve their agency and community.

Each tool, module and asset within the OPS Network™ functions from the main OPS Network™, yet is seamlessly viewed and utilized as a:

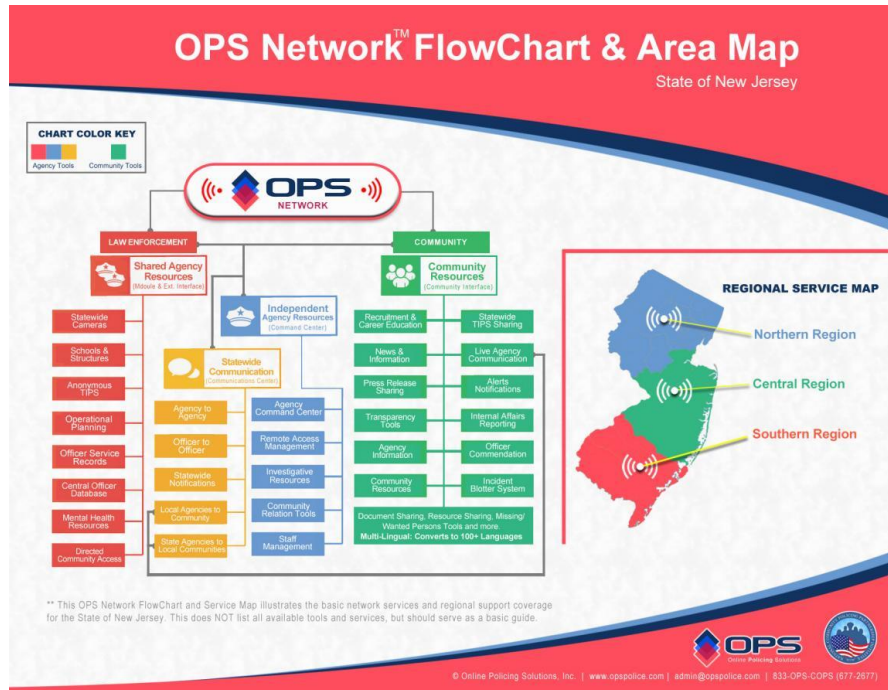
- **“Shared Agency Resource”**: Accessed and utilized to the benefit of all agencies, officers and communities.
- **“Independent Agency Resource”**: Used by all agencies, but data is not shared between agencies.
- **“Statewide Communication”**: Officer to Officer, Agency to Agency, Agency to Community, etc.
- **“Community Resource”**: Used by all community partners to interact with law enforcement.

All OPS Network™ resources generally fall into one of five categories:

- **Module**: Modules are individual tools within the network, which generally are focused on one particular purpose. (*Example: distribute a press release, prepare a missing person flyer, etc.*)
- **Extension**: OPS Extensions work like software within software. OPS Extensions operate within the OPS Network™ but are more complex than modules. (*Example: internal agency document management tools, school and building mapping, fleet management, etc.*)
- **Command Center**: All Command Center assets are unique to the individual agency and include internal agency notifications, remote access to third party tools, access to staff rosters, officer records, etc.

- **Communication:** This includes all communications tools, such as officer-to-officer direct messaging, group messaging and intra-agency case management features.
- **Community Interface:** All Community Interface tools are focused on managing each agency’s independent Community Interface (website) if activated.

The below chart provides a basic visual overview of the OPS Network™ architecture and the network’s New Jersey regional breakdown (*Note: Not all systems are reflected. This chart is provided for general visual reference purposes only*):



THE OPS LENS™ Platform



OPS LENS™ (*Law Enforcement Notification and Sharing platform*) is an OPS Network™ “Extension” that allows all participating agencies to share information quickly and effectively utilizing the powerful OPS Network™ operating system. With **OPS LENS™** officers and agencies can:

- Distribute important information between multiple agencies and officers quickly.
- Notify partner agencies and officers about a myriad of investigative and intelligence related matters.
- View, and quickly respond to, messages, notifications, and emergencies in real-time.
- Instantly share photos, files, and more across jurisdictions.
- Tailor distributions as needed (statewide, interstate, specific agencies, counties, civilian assets, etc.)
- Set notification levels (low / medium / high / critical)
- Include authorized civilian entities and assets where required.
- Search the LENS Platform database for images, names, details, keywords, etc.

- With approval from the NJSP ROIC, instantly distribute statewide (all) notifications.
- Receive instant push notifications to any authorized device in real-time.
- Subscribe to receive notification when a response is posted to an alert.

The OPS LENS platform is secure (utilizing cutting edge 2-factor login procedures and password security protocols), easy to use, robust, flexible and allows participating users to not only securely share information, but update information, respond to information and work together, in real-time, within no jurisdictional borders or limitations.

The OPS LENS platform includes the ability to integrate select civilian and out of state law enforcement partners into the notification chain (via the appropriate method), while affording users the ability to limit the information viewable by those parties.

OPS LENS™ ACTIVATION AND ROLLOUT - NEW JERSEY

As with any new tool or software, especially when the application will be activated across a large region (statewide and beyond), and in numerous organizations, there are many questions about how to ensure the process can be completed in a timely and efficient manner. The OPS Network™ team has developed a plan to reduce the stress of the **OPS LENS™** rollout and to relieve the New Jersey State Police (NJSP) from shouldering the overall burden.

ROLLOUT

For the implementation of **OPS LENS™** to be a true success, all authorized officers and law enforcement agencies who desire access should be provided access to the application if desired. Limited access to the secure sharing of critical information is counterproductive to the end goal of transparency and partnership.

1. With the New Jersey State Police (NSJP) assuming the lead governmental role and management of the NJ Statewide **OPS LENS™** platform, OPS Network™ team members will work with the NJSP and provide the NJSP, and its state law enforcement agency partners, with all required support and training to on-board all enlisted members of the NJSP and other authorized State of New Jersey law enforcement users.
2. OPS Network™ team members will train select members of the NJSP and other authorized state law enforcement partner agencies to be certified as **OPS LENS™** “State Administrators” (SMA).

Once the above is complete, OPS Network™ team members will provide continued support and assist in managing the statewide **OPS LENS™** rollout - per region as defined:

- Southern Region
- Central Region
- Northern Region

OPS Network™ team members will setup, manage and complete the following (see below flowchart):

1. Conduct regional training with all NJ County Prosecutor’s Offices.

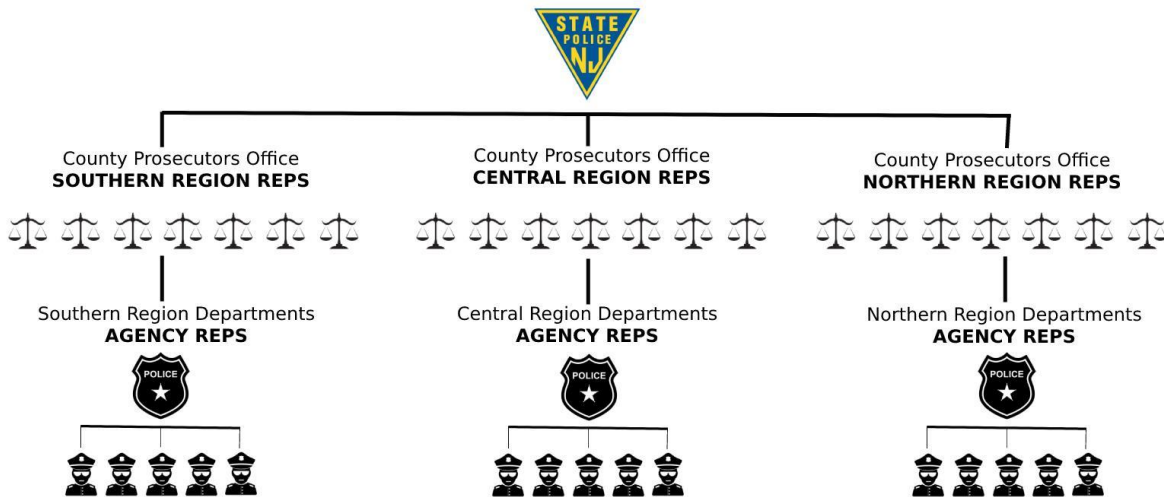
- a. Each regional training will provide the selected county representatives with hands on instruction on how to:
 - i. Sign up members to access the **OPS LENS™** platform.
 - ii. Utilize all the features of **OPS LENS™**.
2. Provide all prosecutor’s offices with the required supporting documents, protocols, policies and technology needed to train and support all agencies and officers in their respective jurisdictions, to include detailed video tutorials.

Once the above training is complete, and all supporting materials are provided, attendees will be certified as **OPS LENS™** “County Master Administrators” (CMA) and will have all the tools needed to on-board their respective county agencies and officers that fall within their jurisdiction.

OPS Network™ team members will continue to support all **OPS LENS™** “State Master Administrators” and “County Master Administrators”, with:

- Technical support.
- Supporting materials.
- On-Site trainings as requested.
- Additional training and support as required and more.

ROLLOUT FLOW CHART



TIME FRAME

To ensure the project’s success, the OPS LENS Platform will be rolled out in two (2) phases.

- **Phase 1: Initial Rollout and Statewide Training:**
 - Barring unforeseen factors, beyond the control of Online Policing Solutions, Inc., all authorized users will be trained and be provided access to the OPS LENS platform within three (3) months of the official project inception and

proper State of New Jersey approvals to activate the OPS Network LENS platform and begin the rollout process.

- At the conclusion of “Phase 1”, all authorized users will have access to the full OPS LENS platform and all its features from any web-based capable device.

- **Phase 2: Mobile Application (APP) Deployment:**

- Within 3 months of the completion of “Phase 1” the OPS LENS Mobile APP will be deployed and made available to all active and registered LENS platform users as well as any newly authorized users.

CONCLUSION

The above OPS Network™ proposal frames out an efficient statewide on-boarding process for launching **OPS LENS™**. This process will help ensure all agencies and officers have access and are utilizing this innovative platform to its full capacity and in a timely manner.

In addition, the OPS Network™ team will shoulder much of the process’s responsibility, such as training and support across the state, so NSJP leadership, and its members, can continue to focus on serving our community partners.

For more information, please contact:



Online Policing Solutions, Inc.

1-888-474-5757 | support@opspolice.com

Or visit:

www.opspolice.com